

ULTIME D Patented

metalfire

Technical Document

ULTIME D MF 800-50 WHE 2SL V20

- Dimensions (mm)**
- combustion opening WxHxD: 806x441x504
 - external WxDxH: 868x600x1443
 - fresh air: 2xØ150
 - diameter flue: Ø250

- Technical Data**
- Ecolabel: A+
 - capacity: 16kW
 - efficiency capacity: 82%
 - CO (volume with 13%O2): 0.061%
 - dust (volume with 13%O2): 23.6mg/Nm³
 - weight: 320kg
 - Air intake to convection: minimum 720cm²(4xØ150)
 - Air exhaust to convection: minimum 720cm²(4xØ150)

- Specifications**
- inside finishing: heat-resistant black paint
 - vermiculite insulation plates
 - convection jacket in galvanized steel
 - back and sides: ribbed cast iron
 - interior finishing: ORIGINAL (ribbed cast iron)

- Options**
- Finishing frame

Table: prescribed insulation thickness (mm)

Test report (TC = 0,14 W/mk)	Combustable finishing material			
	A	B	C	D
	25	25	25	25
Non-combustable finishing material				
non-combustable materials (structural building items EXCLUDED e.g. load bearing walls)	0	0	0	0
TC = thermal conductivity NC = non-combustable				

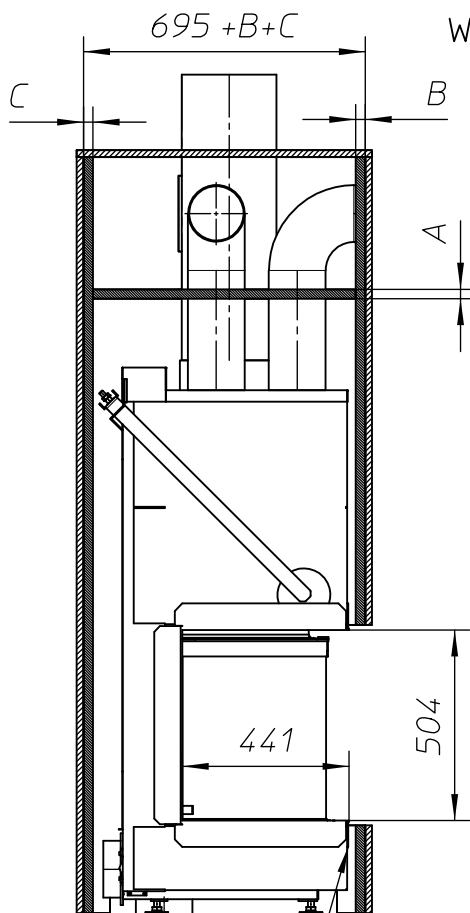
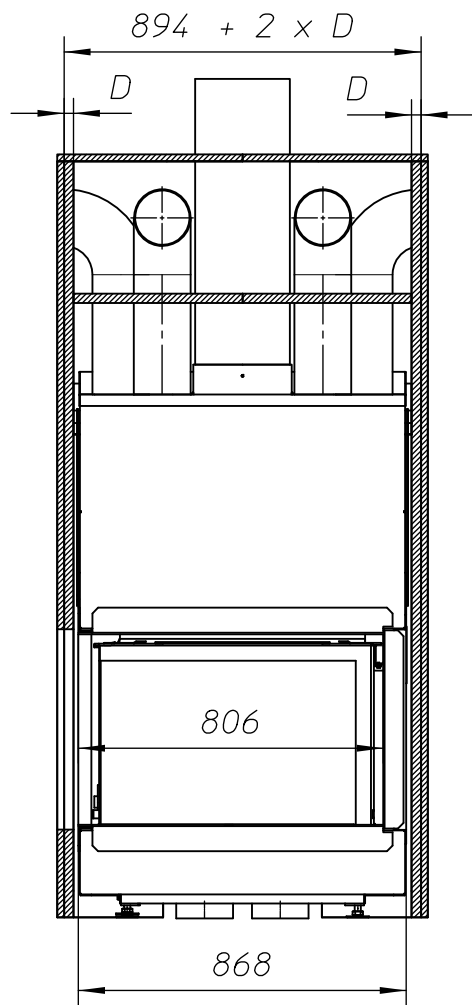
First aid and technical support:

- support@metalfire.eu
- +32 (0)9 261 50 57

scale 1:20 Rev. -1

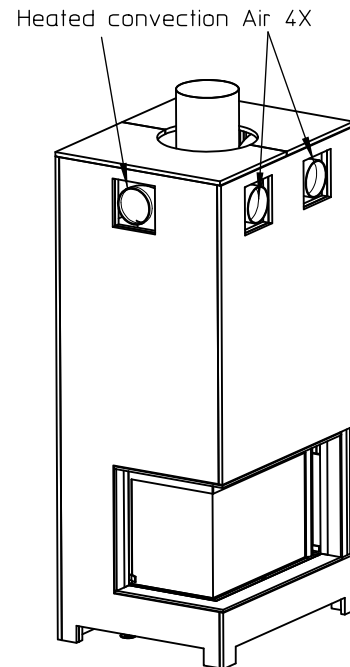
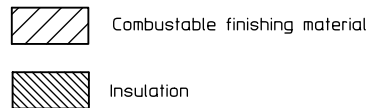
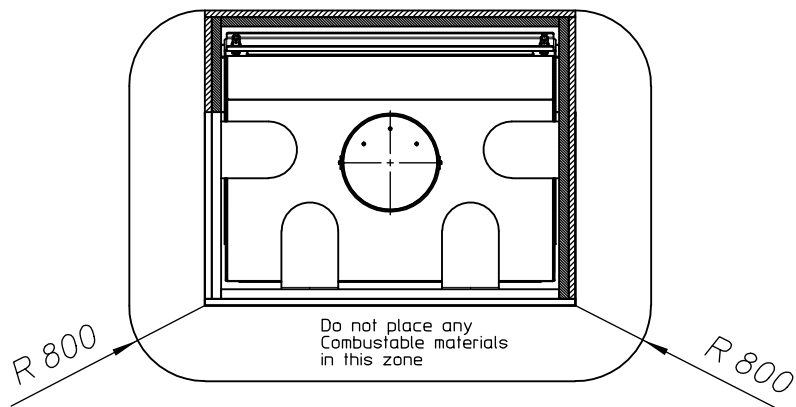
www.metalfire.eu EN 13229 CE

General dimensional tolerances up to 6mm Sheet 1/3
Metalfire preserves the right to modify specifications without previous notice



WITHOUT FINISHING FRAME

Min. 13mm between fireplace and insulation



Scale 1:30

ULTIME D Patented

metalfire

Technical Document

ULTIME D MF 800-50 WHE 2SL V20

Dimensions (mm)

- combustion opening WxHxD: 806x441x504
- external WxDxH: 868x600x1443
- fresh air: 2xØ150
- diameter flue: Ø250

Technical Data

- Ecolabel: A+
- capacity: 16kW
- efficiency capacity: 82%
- CO (volume with 13%O₂): 0.061%
- dust (volume with 13%O₂): 23.6mg/Nm³
- weight: 320kg

- Air intake to convection: minimum 720cm²(4xØ150)
- Air exhaust to convection: minimum 720cm²(4xØ150)

Specifications

- inside finishing: heat-resistant black paint
- vermiculite insulation plates
- convection jacket in galvanized steel
- back and sides: ribbed cast iron
- interior finishing: ORIGINAL (ribbed cast iron)

Options

- Finishing frame

Table: prescribed insulation thickness (mm)

Combustible finishing material				
	A	B	C	D
Test report (TC = 0,14 W/mK)	25	25	25	25

Non-combustable finishing material				
non-combustable materials structural building items EXCLUDED e.g. load bearing walls	A	B	C	D
	0	0	0	0

TC = thermal conductivity NC = non-combustable

First aid and technical support:

- support@metalfire.eu
- +32 (0)9 261 50 57

scale 1:20

Rev.
-1

www.metalfire.eu

EN 13229

CE

General dimensional tolerances up to 6mm
Metalfire preserves the right to modify specifications without previous notice

Sheet
2/3

ULTIME D Patented

metalfire

Technical Document

ULTIME D MF 800-50 WHE 2SL V20

Dimensions (mm)

- combustion opening WxHxD: 806x441x504
- external WxDxH: 868x600x1443
- fresh air: 2xØ150
- diameter flue: Ø250

Technical Data

- Ecolabel: A+
- capacity: 16kW
- efficiency capacity: 82%
- CO (volume with 13%O₂): 0.061%
- dust (volume with 13%O₂): 23.6mg/Nm³
- weight: 320kg

- Air intake to convection: minimum 720cm²(4xØ150)
- Air exhaust to convection: minimum 720cm²(4xØ150)

Specifications

- inside finishing: heat-resistant black paint
- vermiculite insulation plates
- convection jacket in galvanized steel
- back and sides: ribbed cast iron
- interior finishing: ORIGINAL (ribbed cast iron)

Options

- Finishing frame

Table: prescribed insulation thickness (mm)

Combustible finishing material				
	A	B	C	D
Test report (TC = 0,14 W/mk)	25	25	25	25
Non-combustible finishing material				
non-combustible materials (structural building items EXCLUDED e.g. load bearing walls)	0	0	0	0
TC = thermal conductivity NC = non-combustible				

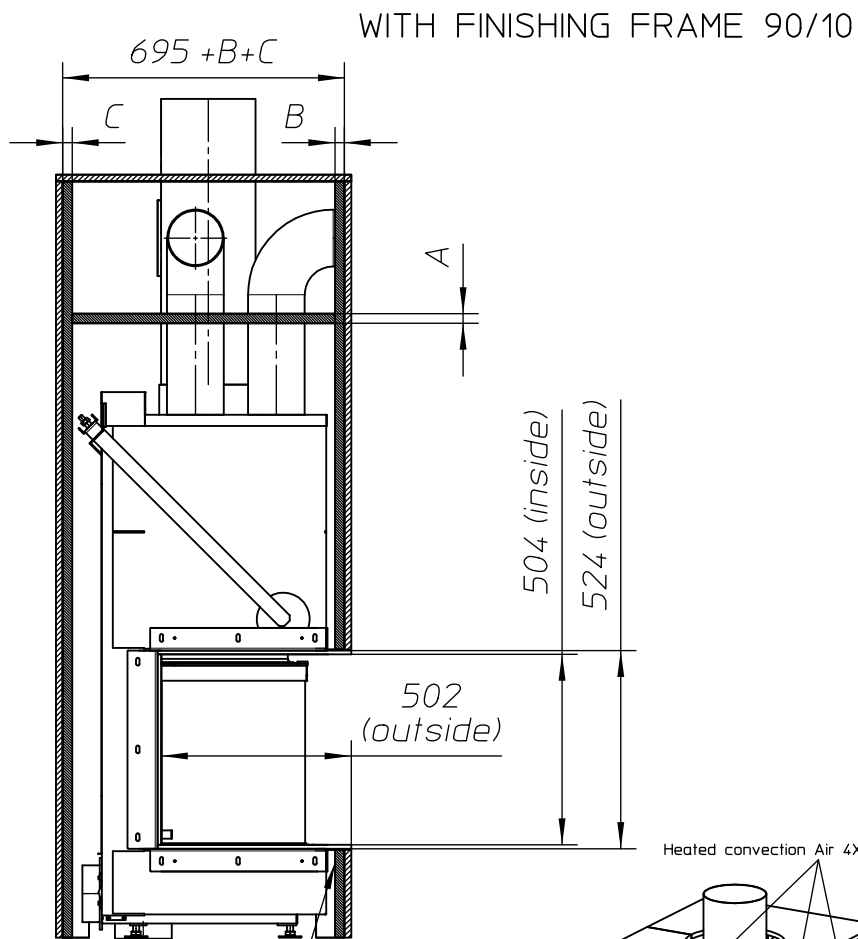
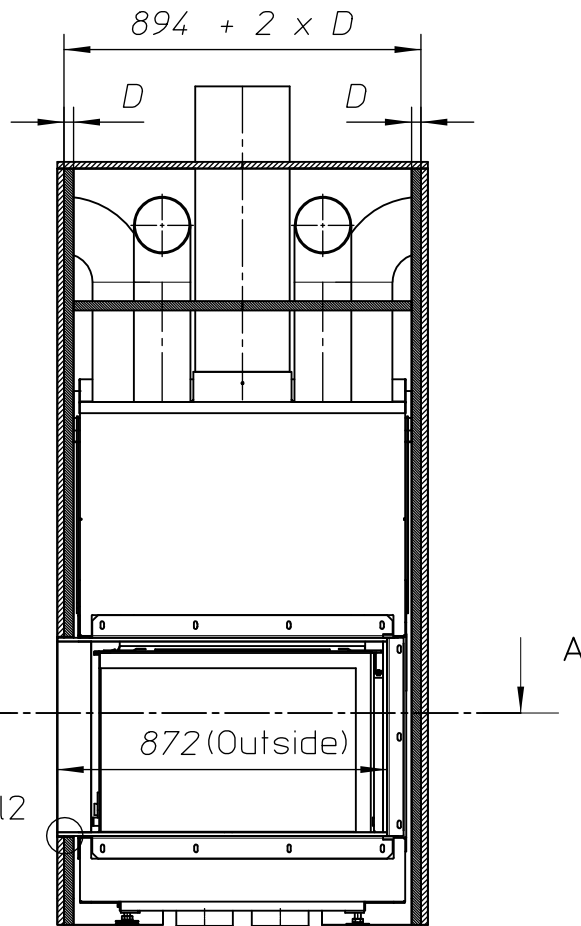
First aid and technical support:

- support@metalfire.eu
- +32 (0)9 261 50 57

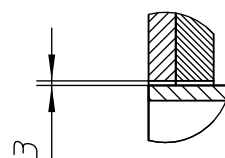
scale 1:20 Rev. -1

www.metalfire.eu EN 13229 CE

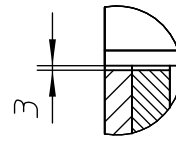
General dimensional tolerances up to 6mm Sheet 3/3
Metalfire preserves the right to modify specifications without previous notice



Min. 13mm between fireplace and insulation



Detail1 Scale 1:5



Detail2 Scale 1:5

- Combustible finishing material
- Insulation

